

## Mechanical-pneumatic control valve

### Type PVM 032

#### Technical data

|                       |                                    |
|-----------------------|------------------------------------|
| Function principle    | mechanical-pneumatic control valve |
| Pressure:             | 8 bar                              |
| Operating medium      | filtered compressed air            |
| Sensor stroke range   | 0 ... ±2mm                         |
| Zero adjustment range | -1 mm ... +25 mm                   |
| Middle sensor force   | 13 N                               |
| Zero adjustment force | 10N .... 120N                      |
| Flow range            | 100 l/min                          |
| Operating medium      | filtered compressed air            |

The mechanical-pneumatic control valve is a simple solution for a table position control.



#### Applications

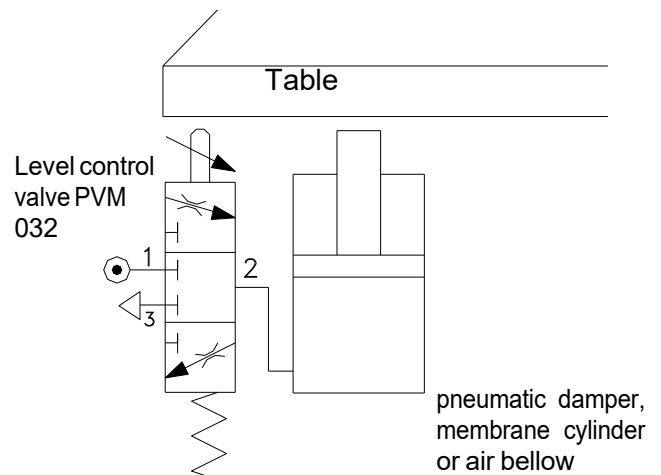
Level control  
 Damping  
 Vibration isolation  
 Reduction of vibration

#### Function principle

The level is constantly scanned by a pin which is connected to the pneumatic spool valve. Depending on the spool valve position, pressure is either applied into the air spring or vented from the inside of the air spring. The table level can be maintained to accuracy to ± 1/100 mm.

Principally three control valves are used for one table; one corner of the table is fixed.

The incoming air supply is conditioned with a pressure regulator to limit system pressure to a maximum of 8 bar, water trap to remove vapour and an air filter to remove dust and any foreign bodies from the air supply.



#### Dimensions

|            |   |
|------------|---|
| Diameter   | 70 mm                                   |
| High       | 70 mm                                   |
| Mounting   | via through holes 2 x 5,3 mm            |
| Connection | plug in connector for plastic tube 6 mm |



Specification subject to change without notice! All rights reserved