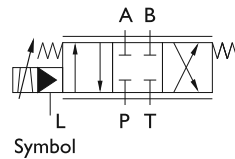
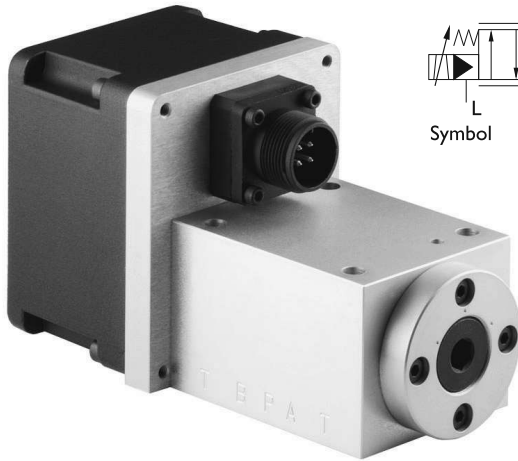


Elektrohydraulic Servovalves Typ HVM 056



Special features:

- high reliability
- easy service
- robust construction
- high dynamic response
- relatively insensitive to contamination
- variable metering orifices only
- $Q_{max} = 50l/min$ at $\Delta p = 70bar$
- $p_{max} = 315 bar$

General description:

Type	:	electrical input stage, torque motor, sliding spool system
Control	:	torque motor actuated pilot spool
main spool	:	located in 4-way sliding and correlated to the same
Style of mounting	:	sup-plate
Mounting position	:	unrestricted
Weight	:	1,75kg

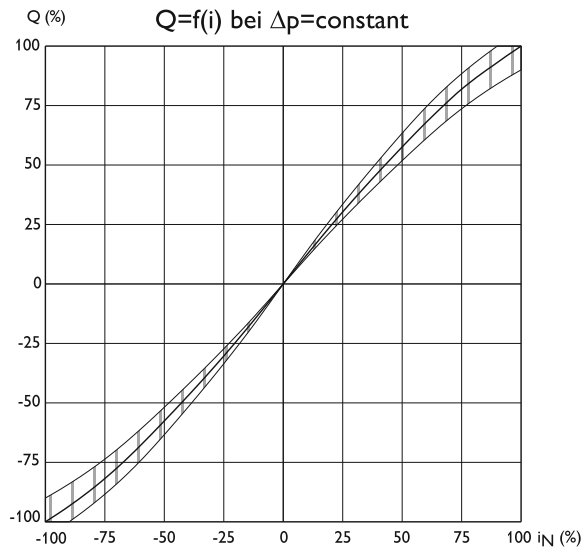
Technical Data

1. Hydraulic Data (definition according to DIN 24311)

.1	rated pressure	p_N	=	210	[bar]	
.2	operating pressure	$p_{b \min}$	=	10	[bar]	*in case of internal connection from L to T max.static pressure 10 bar continuously
		$p_{b \max}$	=	315	[bar]	
.2.1	return line pressure	$p_r \max$	=	35 % p_b *		
.2.2	in case of separate leakage line	$p_L \max$	=	10	[bar]	
.3	max. pressure (static test pressure)	p_{max}	=	450	[bar]	
.4	rated flow at $\Delta p = 70 bar$	Q_N	=	10/20/30/40/50	[l/min]	
.5	quiescent flow, max. at p_N	Q_{01+02}	<	4% Q_N		
.6	internal max. leakage at $p_N = 210 bar$	Q_L	<	50	[cm ³ /min]	
.7	hysteresis	H	<	4,5% i_N 2% i_N	(without Dither) (with Dither)	
.8	threshold sensitivity	E	<	0,5% i_N 0,1% i_N	(without Dither) (with Dither)	
.9	threshold span	S	<	2% i_N 1% i_N	(without Dither) (with Dither)	
.10	linearity deviation		<	10% i_N		
.11	flow symmetry - Q_N zu + Q_N		<	10% i_N		
.12	pressure gain (see diagram)	V_P	>	0,4 P_b / 1% i_N		
.13	overlap, standard	h	=	+1...+3% i_N		
.14	operating temperature range	δM	=	253...353	[K]	
.14.1	temperature drift		≤	2% i_N / 50K		
.15	viscosity range of fluid	γ_{min}	=	10...1000 mm ² /s approximate value normal: ISO VG 10...ISO VG 46		
.16	filtration of fluid		<	class 4-5 class 15/14/11	to NAS 1638 or to ISO 4406	
.17	fluid standard		=	HLP-hydraulic oils as per DIN 51524 Teil 2 (Special equipments possible)		

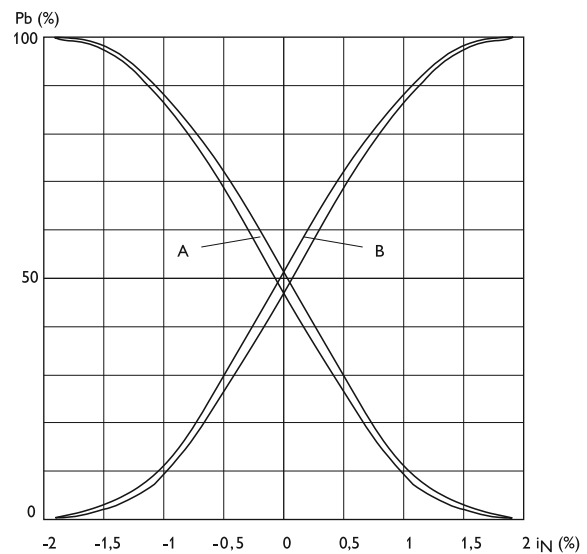
2. Diagrams HVM 057

Flow rate-signal function



Pressure gain

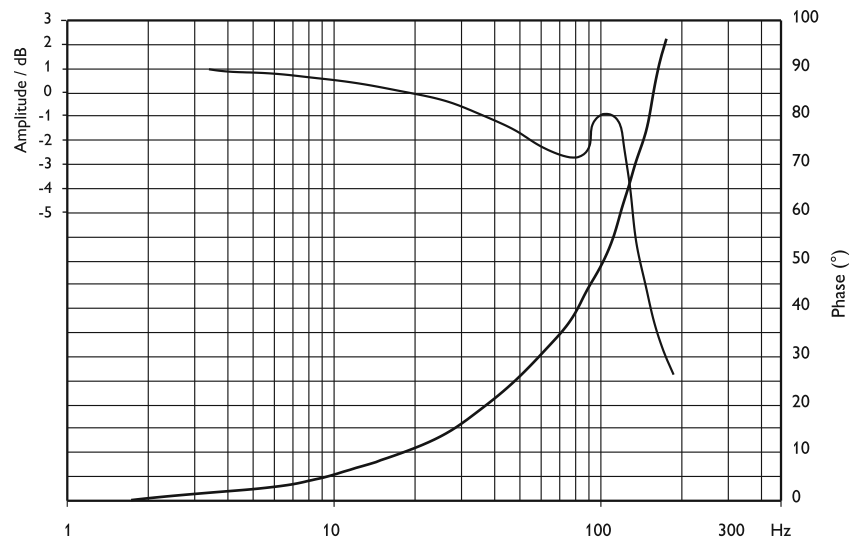
$$V_p = \tan \alpha = \frac{\Delta p}{\Delta I}$$



Frequency Response

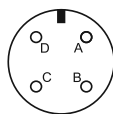
$P_V: 210 \text{ bar}$

— $\pm 30\% I$

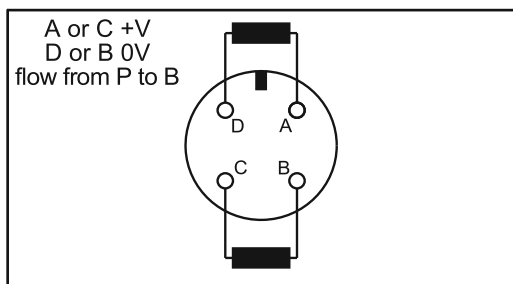


3. Electrical Data

3.1 Electrical Data without Electronic

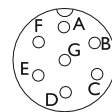


connector 4 pol.
DIN 43563

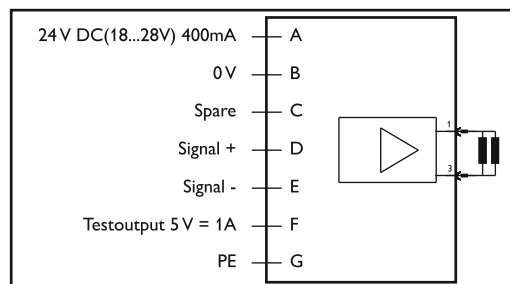


coil type		inductance	rated current	resistance	power
1	1 coil	86 mH	± 325 mA	11,5 Ω	1,35 W
	2 coil parallel	31,2 mH	± 650 mA	6 Ω	2,7 W
2	1 coil	320 mH	± 150 mA	60 Ω	1,35 W
	2 coil parallel	157 mH	± 300 mA	30 Ω	2,7 W

3.2 Electrical Data with Electronic



connector 7 pol.
DIN 43563



Input	E1	E2	E3	E4	Flow
Signal D > E	+ 10 V	4 mA	20 mA	+20 mA	P>A
	0 V	12 mA	12 mA	0 mA	0
	- 10 V	20 mA	4 mA	-20 mA	P>B

Order Information

HVM 056 - 040 - 1200 - XX

Model

056

Rated flow

QN at $\Delta p = 70$ bar

010 l/min

020 l/min

030 l/min

040 l/min

050 l/min

Seal material

1 Perbunan

2 Viton

3 Butyl

4 Vulkollan

5 Ethylen-Propylen

Resistance / coil [R20]

1 11,5 Ω

2 60 Ω

Overlap

0 Zero overlap

1 Positiv overlap

2 Negativ overlap

Amount of overlap

positiv or negative

1..9

Design letter

assigned by manufacturer

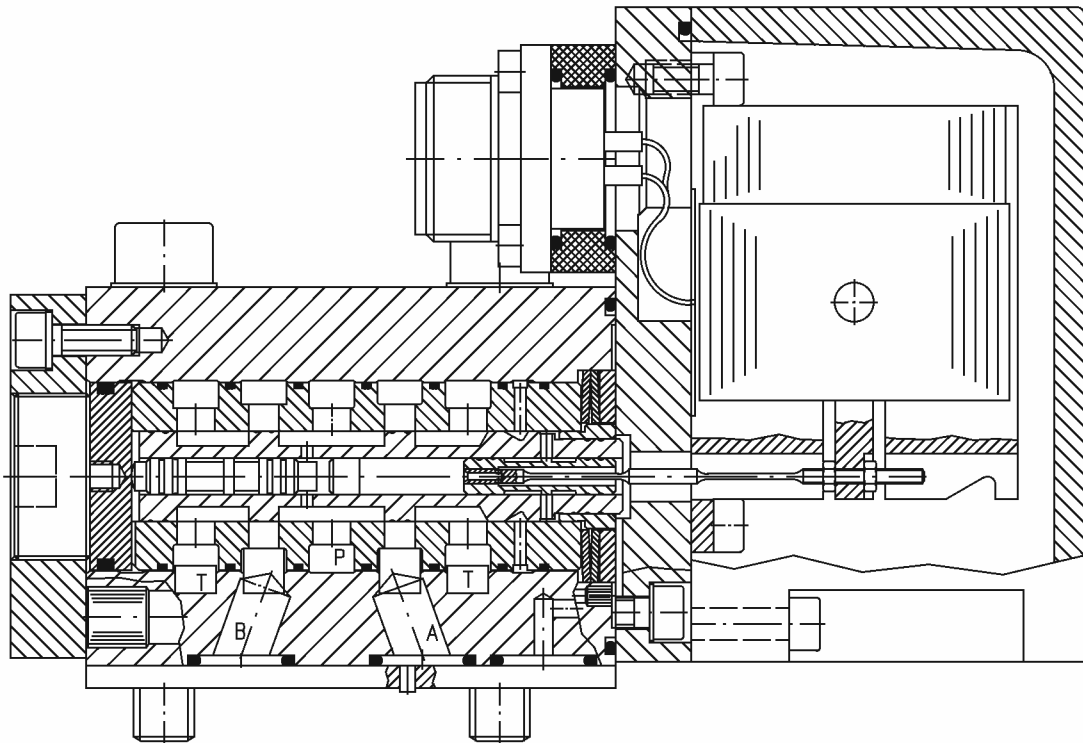
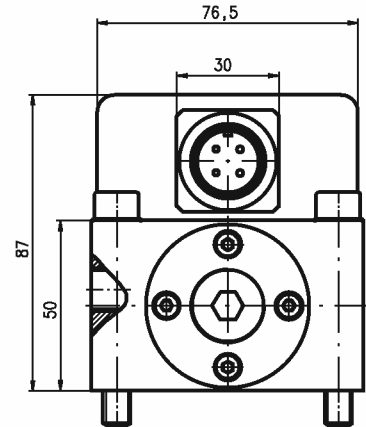
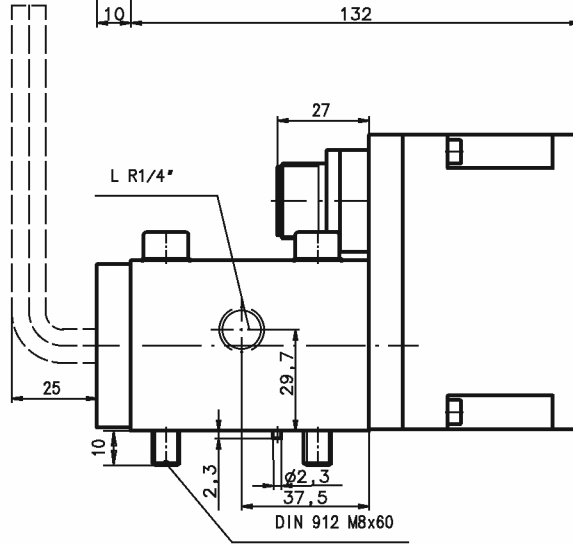
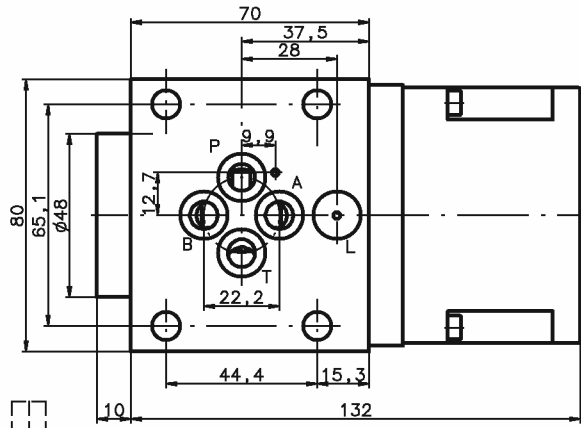
5. Accessories:

Description			Order No.
Connector	4pol.	KE CA 06COM E 14 S2S	13018
Sub plate		HZ 037	14393
scavenger plate		HZ 039	14392
Box-Amplifier		BOE XXX-025-0-5-0A	46965

Important remarks:

Valve mounting surface must be flat within 0,02mm and smoothness not to exceed 6 μ m. Easy hydraulic Zero adjustment by means of Allen key S8 DIN 911. Max. permissible drain line pressure 10 bar. Valves with modified characteristics available. Modifications, which serve technical progress, remain reserving.

Für diese Vorlage bzw. Vorschrift techn. Art behalten wir uns alle Rechte vor. All rights reserved for this document (vgl. DIN 34)



Angaben ohne Einheiten in mm
All dimensions without unit in mm

Nur zur Information / Only for information

Änderungsindex / Amendment index		
-		
Datum Date	Name Name	
dwg.	26.03.01	Dindorf

Ventil
Valve

HVM 056-XXX-XXXX-XX

Id.- Nr.
-

Jos. Schneider Optische Werke GmbH
Ringstr. 132 55543 Bad Kreuznach
Germany

